

HIGH PRESSURE WATER JET NOZZLE
SPIN - JET S Type , SC Type

GM 12-1

16.04.2012



Description

- The spin nozzle is used for water or a mixture of water and cleaning agent.
- The operating temperature is 5°C (41°F) up to 100°C (212°F) .
- The maximum working pressure is 400 bar (5800 psi) .
- The maximum flow rate is 25.6 l/min (6.76 US gal/min) dependant on nozzle.

Type	Order	max. l/min	Orifice Size	α	Housing Material	Pressure	Connection Female
S-040	8101-301	21.8	40	20°	Brass	5800 PSI	1/4" IG
SC-040							
S-050	8101-302	23.7	50	20°	Brass	5800 PSI	1/4" IG
SC-050							
S-060	8101-303	25.6	60	20°	Brass	5800 PSI	1/4" IG
SC-060							

Features

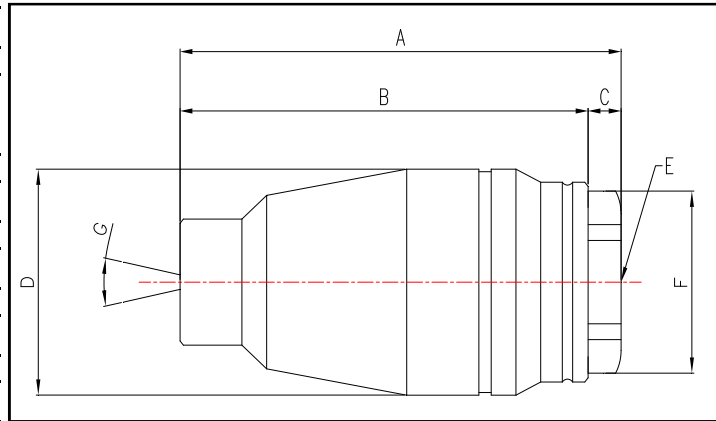
- The 0 degree rotation creates a cleaning and tearing action resulting in saving time and money.
- Turbo nozzles inclease cleaning efficiency as much as 200% compared to a 25 degree flat fan nozzle.

Advantages

- Large area coverage using orbital motion of water jet
- Quick change of nozzle insert
- self orbiting and simple design
- A reasonable price

Technical data / Dimension

Max. Pressure	400 bar
Min. Flow rate	9.6 l/min
Max. Flow rate	25.6 l/min
Max. Temperature	100 °C
Input Connection E	1/4" IG
Weight	0.64 kg
Housing Material	Brass



	A	B	C	D	E	F	G
S-type without rubber cover	107	99	8	Ø43	1/4"	SW32	20°
SC-type with rubber cover	114	106	8	Ø52	1/4"	SW32	20°

Selection Table for SPIN-JET Nozzles

Volume flow in dependance from pressure

Nozzle Type	Pressure (bar)											
	100	110	120	130	140	150	175	200	250	300	350	400
	l/min	l/min	l/min	l/min	l/min	l/min	l/min	l/min	l/min	l/min	l/min	l/min
S-040	9.6	10.0	10.4	10.8	11.2	11.6	12.5	13.4	15.5	17.6	19.7	21.8
SC-040												
S-050	11.5	11.9	12.3	12.7	13.1	13.5	14.4	15.3	17.4	19.5	21.6	23.7
SC-050												
S-060	13.4	13.8	14.2	14.6	15.0	15.4	16.3	17.2	19.3	21.4	23.5	25.6
SC-060												